



THE IZAAK WALTON LEAGUE OF AMERICA

Winter Fishing Weekend & Tournament	Saturday February 4th, 2017
Mandatory Rules Meeting:	Friday February 3th, 2017 , Ramkota, Pierre, SD. Check-in starts at 4pm. All teams must be checked no later than 6:30pm (limited exceptions allowed). Drawings & rules meeting at 7pm. Only team members present will be eligible for prize drawings.

WFW Tournament Rules and Participation Agreement

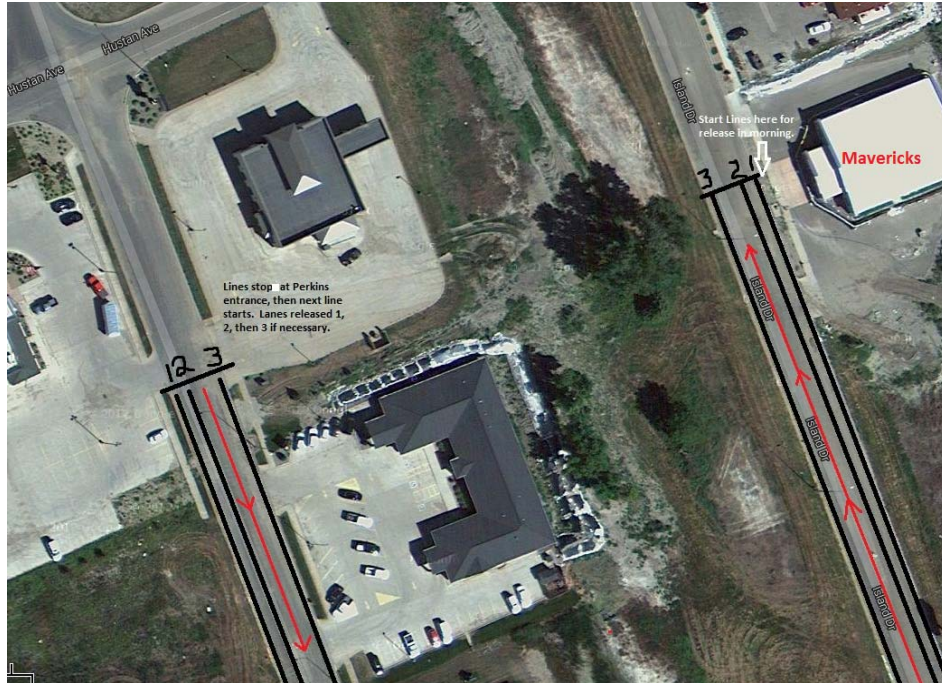
1. Eligibility: Two-person teams. Team entry fee is \$125 if entered by 12/31/2016; \$150 from 1/1/17 to 2/2/17; and \$175 if enter the day of the rules meeting. Each participant must have a valid SD fishing license and be 18 years of age, unless accompanied by parent or guardian. Each participant will be required to sign a Waiver of Liability form at the Rules Meeting. **Child Exception:** Up to 2 children 12 years of age and under may also participate on a team; however, the number of lines allowed will be equivalent to two anglers.
2. Fish Categories: places will be paid for the most weight and largest fish (by weight) in each fish category (panfish exception: within the panfish division, we will pay for the largest perch, bluegill/sunfish, and crappie). Fish categories include: **1) Walleye** (includes Sauger/Saugeye); **2) Northern Pike**; **3) Panfish** (Perch, Blue Gill, Sunfish, Crappie); **4) Bass** (Largemouth, Smallmouth, White). A prize for the largest "other" fish will also be paid (catfish, salmon, trout, carp, etc). **Separate Boat Walleye Division: if less than 10 boat teams enter the tournament, officials will reduce the boat payouts or merge the divisions as deemed appropriate.**
3. Fish Details: Follow State regulations for limits and lengths. Each team must choose the fish category they want to compete in for total weight **before weigh-in**. No more than 6 fish will be weighed in that category (teams cannot compete for total weight in multiple categories). Teams can also weigh one large fish in each category to increase chances of winning a fish prize; **however, teams can win no more than one fish prize**. Any fish presented at weigh-in CANNOT be frozen. Walleye must be at least 15" minimum length.
4. Boundaries: Any publically accessible waters (**no private dams**). Access to these waters must also be public (no crossing private land)
5. Ice/Shore Fishing Tournament Hours: Ice/Shore teams will be checked in and released starting at **7am** at Mavericks Motor Sports, 502 Island Dr, Ft. Pierre. All ice/shore teams must be checked in no later than **8am** or the team will be disqualified from any fish prize eligibility. Once you check in you are free to fish. Display your team number on your dash at all times. Be prepared to show your ID as tournament committee may be randomly checking ID's to ensure both contestants are present. Both contestants on each team MUST check in together and MUST return to the weigh-in if weighing fish. If not weighing any fish, you will need to check in either at Mavericks or the Ramkota by **6:30pm**. (This rule is for safety and to ensure that all contestants have checked in.) Weigh-in will be located Mavericks Motor Sports **beginning at 3:30pm** for those teams wishing to weigh early. All ice/shore teams must be at Mavericks **no later than 6:30pm**. If either team member is late for weigh-in, the team is disqualified, **no exceptions**.
6. Boat Fishing Tournament Hours: The boat division will be checked in and released starting at **9am** at Mavericks, and all boats need to weigh-in no later than **4:30pm** at Mavericks. Any boat team not checked in by **9:30am** will be disqualified, and any boat not at the weigh-in location by 4:30pm will be disqualified.
7. Weather: In the event of inclement weather on the day of the tournament, there will be no refunds on entry fees. Weather-permitting, the fishing tournament will be held on Sunday February 5th. If not able to fish on Sunday, there will be drawings at the Ramkota to select prize winners.
8. Tournament anglers must stop pre-fishing by 4pm the day of the Rules Meeting, and no fishing is allowed until released at check-in the day of the tournament. Shacks may be left on the ice overnight at your own risk, but no fishing is allowed after 4pm Friday.
9. All team members must be present at the Rules Meeting (limited exceptions) and must be present to win prizes. Anglers also need to have an ID in order to collect prizes if required by the WFW.
10. All anglers (including children) must be within a 25-yard radius of their center point or occupied shack.
11. Tournament anglers cannot fish with non-tournament anglers; however, multiple teams may fish in the same shack or boat. Each team may use the maximum number of lines allowed by state regulations. (teams with children must adhere to line limit for 2 anglers). Refer to the GFP Fishing Handbook for # of lines allowed.
12. Anglers may use only a standardized hook and line system with artificial bait or live bait. Live bait is limited to less than 12 dozen of the following: fathead minnows, creek chubs, white suckers and golden shiners. If using more than 12 dozen or any other type of live bait, anglers must possess an importation permit from SD GFP. No spearing or snagging of fish allowed. Tournament committee officials or weigh master will examine all fish brought to weigh-in.
13. You are the best marshal for a tournament. Tournament marshals will be stationed at various locations, but if you see anything suspicious, please call tournament officials at 605-945-3660. Tournament officials have the discretion to deny teams from entering the competition or removing them for any suspected rule violations. Tournament Officials' decisions are final.
14. All motorized vehicles are allowed in accordance with state and federal laws, along with all electronic fish locating devices, and all types of ice fishing shacks (no more than two ice shacks per team).
15. Fish will be measured on both sides and tails will be pinched. Any mangled, mashed or mauled fish will be weighed at the discretion of the weigh-in official and tournament coordinator. All decisions of the measure master, weigh master and tournament director are final.

Participation Agreement: I understand this is a professional sporting event, governed by the rules that have been established by tournament organizers. I acknowledge that I have received a copy of these rules, read them and understand them. In addition to terms of entry and competition, these rules relate to the safety of all participants as well as the fair sporting conduct of this event. The Tournament Director shall act as referee in all disputes and his/her decision based on his/her interpretation of the rules will be final and without legal appeal.

I understand there will be no refunds of tournament entry fees.

Release and Weigh-in: At Mavericks 502 Island Drive, Ft. Pierre

1. Morning Release – 3 lines will be used if necessary, and lines will be released in order. **Park as close as you can to the vehicle in front of you.** We will not release in team order but based on who gets there first. Teams line up in line 1 starting at Mavericks until the last vehicle reaches the Perkins entrance (all traffic must be moving in the direction of the red arrows). Then start a new line at Mavericks at Line 2. Line 3 after that. **Please leave enough room in the middle to allow for emergency traffic (essentially where the red line is.** No line jumping and wait your turn. Release will take no more than 15-20 minutes. No parking vehicles overnight at release location and don't block any roads or business entrances.
2. Weigh-in - Enter the front door of Mavericks. There should be adequate parking in the parking lot and along Island Drive. Spotters will be around should it get close to the end of the weigh-ins. Don't be late! **There will be no exceptions.** If you are not in front of Mavericks by 4:30pm (boats) or 6:30pm (ice/shore) and spotted, you will not be allowed to weigh fish.



If three lines are completely full or you arrive aft 7am, proceed to the 2nd release point. This group will be released last. Stop by the Holiday Inn Express and form a line starting there. If that fills up form a second line on the same route.



Pierre Winter Fishing Weekend FAQs

What do I get for my \$125 Registration?

Entry in the tournament, and each team will receive two entries for the “angler only” drawings and two entries for the ATV. Only anglers fishing in the WFW tournament are eligible for the “angler only” drawings and the ATV. We will once again have a table Friday and Saturday evenings where tickets can be purchased for additional items open to anyone. All funds received prior to February 5th are paid out in either fishing cash awards or prizes given away, at the committee’s discretion. Any remaining funds carry over to the following year’s tournament.

Can I win several fish awards?

No. In order to make the tournament experience valuable for many anglers, only one fish award can be won per team. For example, if a team wins the total weight for walleye, the team cannot also win a large fish prize in the walleye or any other fish categories.

What happens if there is a tie?

If there is a tie, we will split the prize.

Can I fish in multiple fish categories?

Yes, teams may fish in multiple categories; however, prior to weigh-in the team must choose which category they want to compete in for total weight. Teams can have a large fish weighed in each category to increase the chances of winning for a large fish; however, only one fish prize will be awarded per team. Should a team place in total weight and also have a largest fish in any category, the award with the biggest payout will be paid to the team. (ie. team places 2nd for total weight in panfish but also wins for largest bass, the award with the largest dollar amount will be paid to that team).

Where can I fish?

Any waters accessible to the public. **Absolutely no private stock dams.** Publicly accessible waters means anyone can fish on that body of water, and no permission is required. This is primarily lakes and ponds on government land. If you have to access the public water through private land where permission is required, you may not fish there unless accessing via public means. Equal access and opportunity to all anglers is required. Apply common sense...**if I have to have permission to fish it or get to it, then it is off limits.**

Example: there are some public ponds on the grasslands where you can get to them via section lines (public), old closed roads (public but DO NOT drive on them), or through private land. You may fish these ponds by walking in on the public areas (no motor vehicles of any kind), but you may not access the ponds via private land other than via section lines which would be deemed public access (no shortcuts through private!).

Grasslands: DO NOT DRIVE OFF DESIGNATED ROADS! You will be ticketed! The Forest Service will be patrolling.

If anglers have concerns, the rules hotline can be called at **605-945-3660**.

I only caught one fish. Do I have to have it weighed?

No. However, random places in various fish categories will be drawn for cash prizes. This is designed to give all people that caught a fish a chance to win. You may get last place in total weight, but still win a prize. **However, DO NOT bring in small fish that should be released. Take a picture and bring to weigh-in. If you don’t have a phone or picture record, check in to the weigh-in location and discuss with officials. Release all small fish not deemed worthy of weighing in.**

Will there be a boat only walleye division?

Yes. If fewer than 10 boats are entered into the tournament, the prize money will be reduced accordingly or divisions merged.

Can a boat fisherman also weigh-in a large fish in another category?

Yes. However teams can only win one fish prize as stated above.

Why is the boat release time later and weigh-in earlier than ice/shore fisherman?

It is sometimes dangerous early in the morning with ice in the river and boat ramps are slick. Having boats weigh-in earlier will also prevent congestion at the weigh-in location and will allow the boat owners to clean up and drop their boats off prior to the awards/raffles.

Can multiple people fish out of the same boat/shack?

Yes. Use common sense and sportsmanship. Once a team has their fish to be weighed in, they must cease fishing while the other team continues.